

CONSTRUCT
by **Palmako**



Glued laminated timber

ABOUT US	4
BRAND NEW PRODUCTION LINE	6
GLULAM BEAMS	8
CNC machined glulam	10
Laminated Ceiling Beams	11
DUO/TRIO BEAMS (GLUED SOLID TIMBER)	12
GLULAM LOGS	14
STRUCTURAL FINGER JOINTED SOLID TIMBER	15



It's all in the details

Construct as a brand is a perfectionist focused on its role and performing the tasks and duties that come with that role. Committed to its aspiration to be the best in its field, it is a pedantic specialist, not a general workman good at everything. Construct values cost-efficient sustainability in construction and employs wood as its material, using a sustainable way of thinking. As for work processes, it appreciates both an understanding of the great whole and a keen sense of detail within the whole.

It is fast, demanding and uncompromising — for it, there are no insignificant technicalities that can be forgotten about during the work. It makes no empty promises, does not waste time, does not descend into vague deliberations. It does not assume, it will investigate. It will do everything to ensure every last detail is in place at the right time and the whole functions as efficiently as possible.



ABOUT US

Palmako is the leading manufacturer and exporter of glued laminated timber and log cabins in Estonia. We belong to the Lemeks Group which is the largest Estonian timber and forestry concern. In 2014 Lemeks moved into brand-new office building, where the special-designed glulam beams are manufactured by Palmako.

High Quality Products

Product quality is Palmako's main priority. Our companywide quality management system covers the entire production process and ensures conformity of the final product with the established quality requirements. Our glulam products are CE certified by MPA Stuttgart Otto-Graf-Institute and FSC® certified by the Forest Stewardship Council.



Business Idea

Palmako's Business Idea is to sell a wide range of high quality wooden products to a conscientious and environmentally aware client base.

Nordic Spruce

Our products are made of high quality Nordic spruce, which is known for its properties all over the world. Long cold winters and short summers, characteristic to our region, bring about a slow growth rate of timber, providing it with longevity and durability.





Service quality

By using the best raw materials, advanced technologies and high-level skilled labour we can manufacture products that meet the needs of even the most demanding clients. High level of multi-lingual support services and customer-centeredness ensure consistent quality in arranging transportation and customer support.

Social responsibility

Timber is an environmentally friendly construction material – it is light and strong as well as being easy to process. Although wood is a sustainable and regenerative natural resource, forestry requires careful and responsible management. Palmako is FSC® certified, ensuring that we use wood from responsibly managed forests. We place an emphasis on environmentally friendly ways of thinking in everyday life and value greatly the wellbeing of the environment and its natural resources.



BRAND NEW PRODUCTION LINE

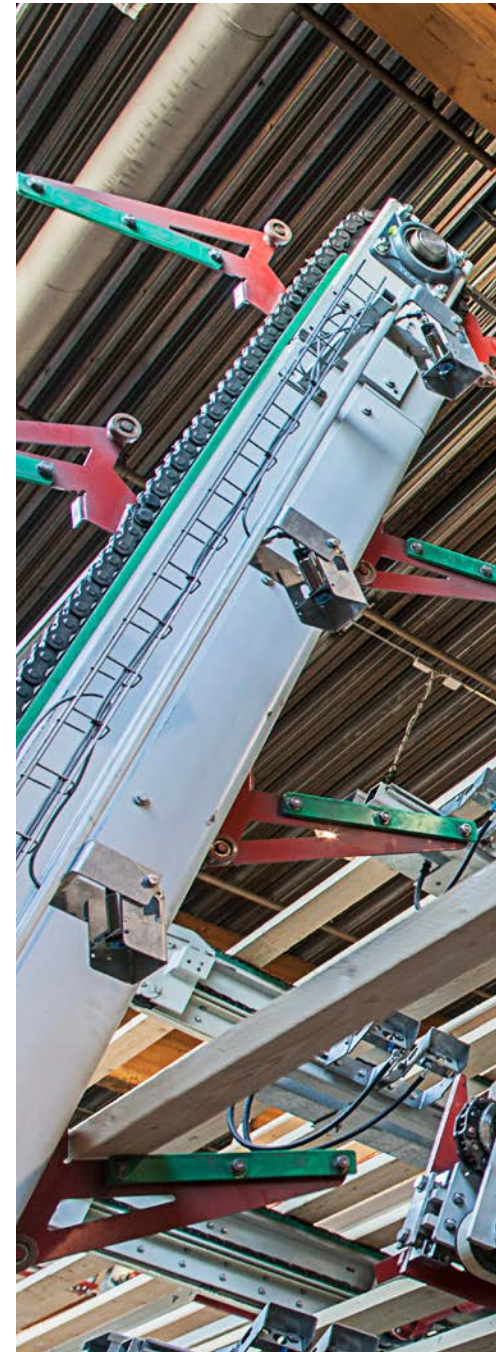
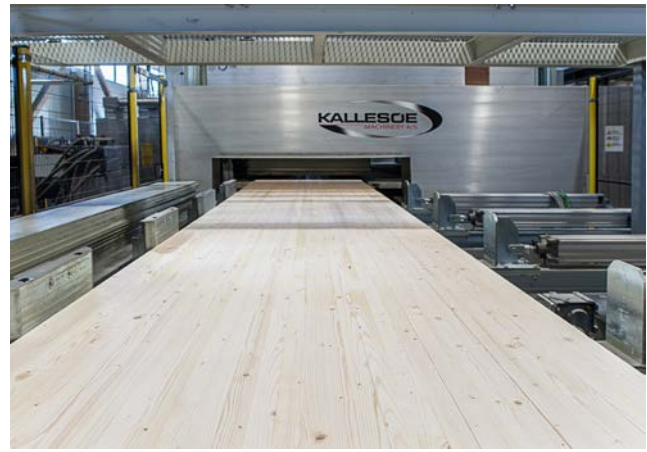
In 2019 Palmako opened the most innovative glulam production line in Baltics. It has now opportunity to offer for customers cut to size beams together with final CNC milling produced from high quality Nordic timber. The new line enables to produce glulam beams up to 18 meters long and up to 1280 mm high. Palmako has a capability to produce 45 000 m³ glulam per year.

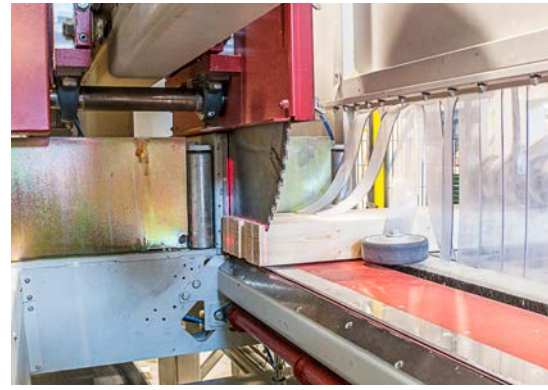
More emphasis can now be placed on **custom-made products**. In this case the quantities can be small and projects individual but the new **fully automated production line** is capable of **delivering work quickly** while maintaining **high quality**.

The production line concept was created as a collaboration of **world-renowned professionals** so the new machine park consists of **top modern machines**. German industry plant manufacturer **Minda from Minden** was responsible for mechanization, manufacturing control engineering and project management, **Kallesoe Machinery, Lem/DK**, supplied the high-frequency press, the planing units come from **Schwarzbeck, Pinneberg/DE**, and **Weinig Grecon, Alfeld/DE** delivered the trimming machine and finger-jointing unit.

The new solution makes the production line **logistically complete**, the whole production is **faster** and **more flexible**. The entire process is optimized and managed using specialized computer software, which minimizes losses during storage and internal logistics.

Palmako glulam products are sold under the trademark **Construct by Palmako** which is a supplier of structural timber-based project solutions. It helps the customer to save material, time and energy, offering efficient complete structural timber solutions.

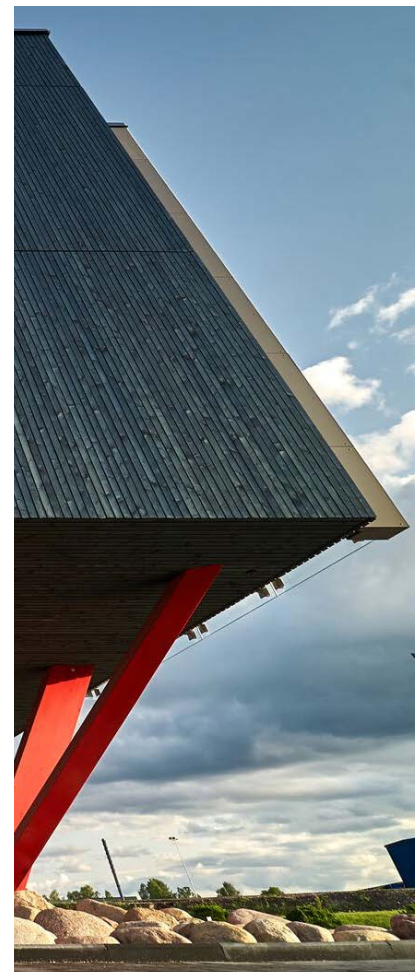
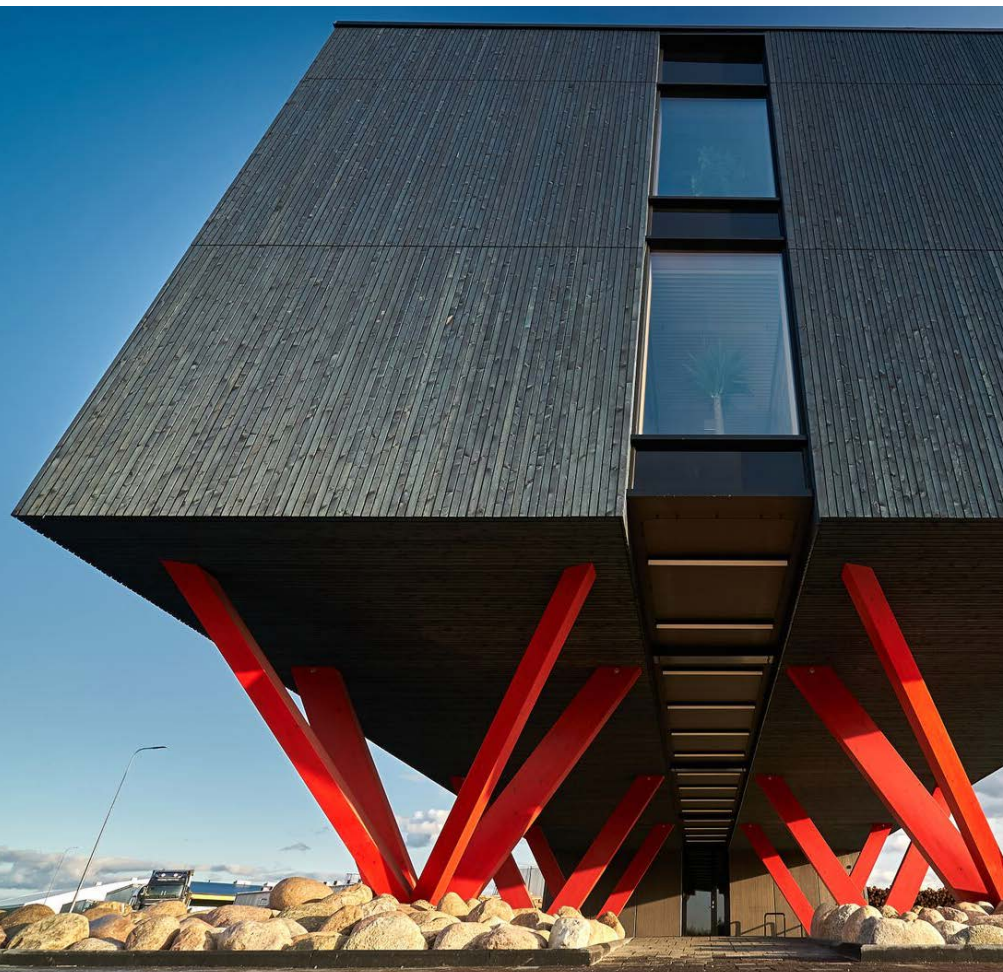




GLULAM BEAMS

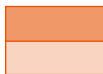
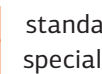
Product description:

Lumber species:	Nordic Spruce (Picea abies)
Manufacturing:	In accordance with EN 14080
Timber grading:	In accordance with EN 14081 / DIN 4074
Finger jointing:	In accordance with EN 14080
Strength class:	GL24; GL28; GL32 acc. EN 14080
Lumber moisture:	8-15%
Lamella thickness:	Standard 40 mm, can be up to 45 mm
Gluing:	PUR for FJ, MUF glue, light, non darkening, EN 301 Type 1, waterproof
Delamination tests:	EN14080 Annex C
Surface quality:	Planed on four sides, chamfered, visual or non visual quality, end trimmed
Lengths:	Up to 18,0 m
Packaging:	Pack covered with plastic from 6 sides, beams single wrapped
Inspection report:	In accordance with EN 14080
CE certificate number:	0672-CPR-0465
Notified body:	0672; Materialprüfungsanstalt Universität Stuttgart



Palmako beams cross-sections: GL24; GL28 (GL30, GL32 on request)

Height (mm)	Width (mm)										
	60	80	90	100	115	120	140	160	180	200	240
80											
90											
100											
120											
135											
140											
160											
180											
200											
225											
240											
270											
280											
315											
320											
360											
400											
405											
440											
450											
480											
495											
520											
540											
560											
585											
600											
1200											
1240											
1280											

 standard product
 special product

Ask for cross-sections you need!
On special request we can offer GL32 beams.



CNC machined glulam

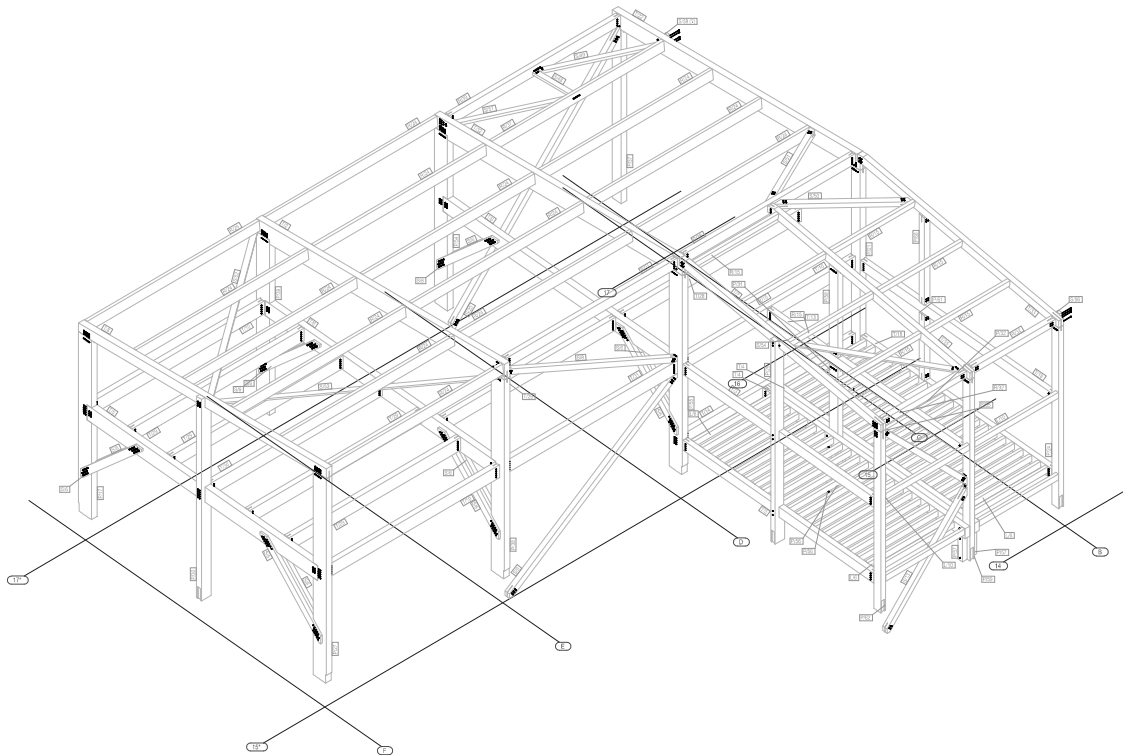
Thanks to its five axes machining Hundegger K2i can handle any kind of wooden components.

We can prepair beams for:

- Pavilions
- Garage parking
- Roof construction and carpentry roof ties
- Family houses and residential buildings
- Log buildings
- Farm buildings, riding-schools, stables
- Halls
- Large span structures
- Civil engineering
- Walkways and bridges
- Special and hybrid structures

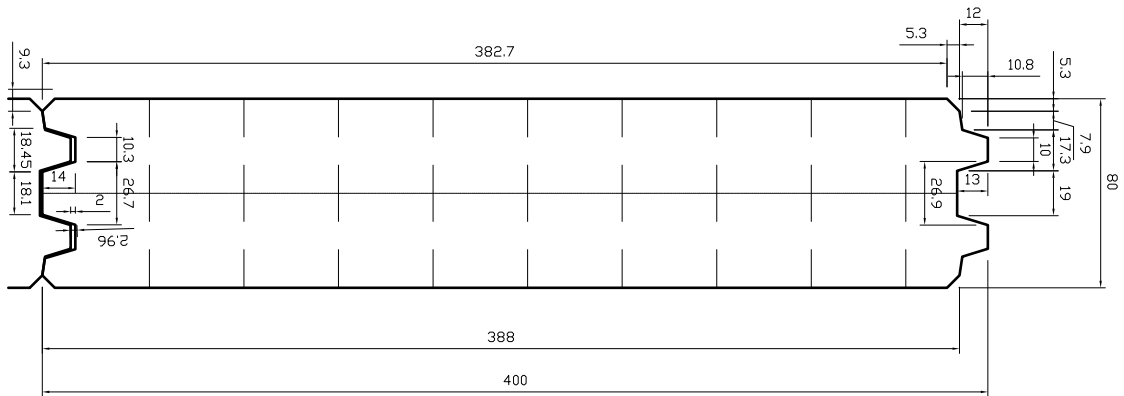
Processing options:

- Cutting
- Milling, halving, tapping, mortising
- Drilling
- Marking and labeling



Laminated Ceiling Beams

Product height up to 1200 mm. Can be also used as a roof beam.



DUO/TRIO BEAMS (GLUED SOLID TIMBER)

Product description:

Lumber species:	Nordic Spruce (Picea abies)
Manufacturing:	In accordance with EN 14080
Timber grading:	In accordance with EN 14080, DIN 4074
Finger jointing:	In accordance with EN 14080
Strength class:	EN338
Lumber moisture:	8-15%
Lamella thickness:	Starting from 45 mm
Gluing:	PUR for FJ, MUF glue, light, non darkening, EN 301 Type 1, waterproof
Delamination tests:	EN14080 Annex C
Surface quality:	Planed on four sides, chamfered, visual or non visual quality, end trimmed
Lengths:	Up to 18,0 m
Packaging:	Pack covered with plastic from 6 sides, beams single wrapped
Inspection report:	In accordance with EN 14080
CE certificate number:	0672-CPR-0465
Notified body:	0672; Materialprüfungsanstalt Universität Stuttgart

Ask for cross-sections you need!





GLULAM LOGS

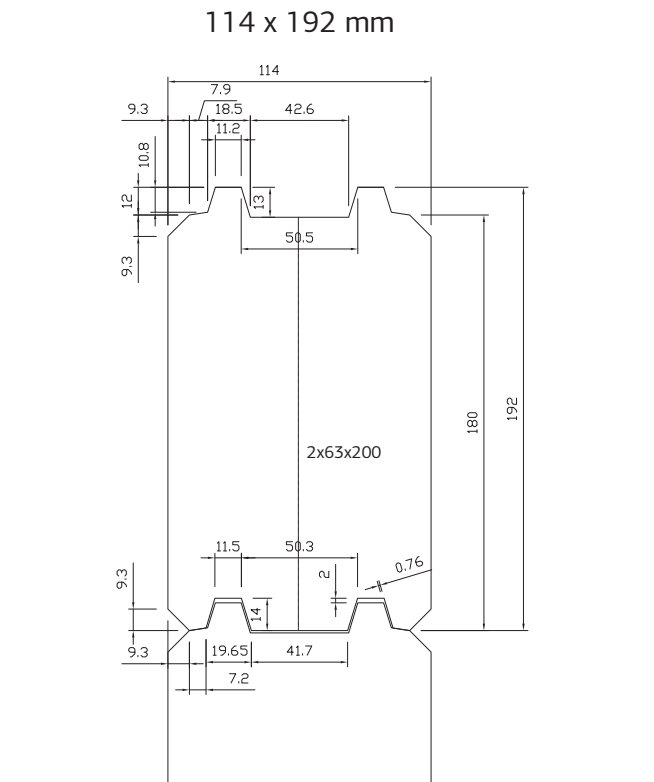
Product description:

Lumber species:	Nordic Spruce (picea abies)
Finger jointing:	In accordance with EN 14080
Lumber moisture:	8-15%
Lamella thickness:	According customers requirements
Gluing:	In accordance with EN 14080
Glue:	MUF glue, light, non-darkening, EN 301 Type 1, waterproof
Surface quality:	Planed, profiled, visual quality
Lengths:	Up to 18,0 m
Packaging:	Pack covered with plastic from 6 sides

Standard cross-sections

Height (mm)	Width (mm)						
	88	114	134	165	180	202	238
192							
242							

standard product



STRUCTURAL FINGER JOINTED SOLID TIMBER

Product description:

Lumber species:	Nordic Spruce (Picea abies)
Manufacturing:	In accordance with EN 15497
Timber grading:	In accordance with EN 14081 / DIN 4074
Finger jointing:	In accordance with EN 15497
Lumber moisture:	8-18%
Thickness:	Standard 40 mm, can be up to 60 mm
Surface quality:	Planed on four sides, chamfered, non visual quality, end trimmed
Lengths:	Up to 13,5 m

Ask for cross-sections you need!





Palmako AS

Näituse 25

50409 Tartu

Estonia

Phone: +372 7 355 530

Fax: +372 7 355 544

construct@palmako.ee

www.construct.ee